

RESOLUTION

RESOLUTION OF THE BOARD OF TRUSTEES OF THE BLINN COLLEGE DISTRICT APPROVING THE REDISTRICTING OF THE COLLEGE'S SINGLE-MEMBER TRUSTEE DISTRICTS AND ESTABLISHING NEW TRUSTEE DISTRICT BOUNDARY LINES FOR TRUSTEE ELECTIONS BASED ON 2020 CENSUS DATA; PROVIDING FOR AN EFFECTIVE DATE; AND PROVIDING FOR THE CONTINUATION OF TERMS OF CURRENT TRUSTEES.

WHEREAS, the results of the 2020 federal Census have been considered and indicate that the four single-member trustee districts of the Blinn College District (“District”) are sufficiently out of population balance to require redistricting in order to comply with the “one-person, one-vote” (equal population) principle established by the U.S. Constitution; and

WHEREAS, the District’s territorial extent is the whole of Washington County, and the District desires to adopt a redistricting plan in which the District’s four trustee districts are identical to the four Washington County commissioner precincts, in part to reduce the potential for voter confusion and to ease the difficulty of election administration; and

WHEREAS, the District has a long history and custom of adopting trustee precincts identical to the County’s four commissioner precincts; and

WHEREAS, the District engaged the law firm of Bickerstaff Heath Delgado Acosta LLP to act as the District’s redistricting consultant, including advising and assisting the Board of Trustees in preparation of a new redistricting plan in compliance with applicable requirements of state and federal law; and

WHEREAS, during the redistricting process, the District provided notice to the public of the District’s proposed discussions of a redistricting plan, through meeting agendas posted in compliance with the Texas Open Meetings Act and notices on the District’s website, and

WHEREAS, the Board has considered the proposed redistricting plan, the Washington County commissioner precincts adopted by the County in 2021 based on the 2020 census, at Board meetings on October 18, 2022, and November 15, 2022; and has considered advice from the District’s redistricting consultant; and

WHEREAS, the Board finds that the attached four single-member trustee district

redistricting plan, based on the 2021 Washington County commissioner precincts plan, is in the best interest of the residents of the District and is believed to comply with all state and federal requirements; and

WHEREAS, section 130.0826 of the Texas Education Code provides that board of trustees of a county-wide community college district that adopts a redistricting plan under Education Code section 130.0821(e) or Education Code section 130.0822 may provide for the trustees in office when the college district is redistricted to serve for the remainder of their terms in accordance with Education Code section 130.0826; and the Board finds that there is a benefit to the operations of the District if the same trustees in office continue to serve until their terms expire;


NOW, THEREFORE, BE IT RESOLVED BY THE BOARD OF TRUSTEES OF THE BLINN COLLEGE DISTRICT:

A. That the existing four single-member trustee district boundary lines for the District are hereby amended, and the new districting plan depicted on the map attached hereto as **Exhibit A**, defining new trustee districts, as such new districts are further described in the tables attached hereto as **Exhibit B** reporting populations and demographic statistics for each such new district, is hereby adopted and designated to define the District's four single-member trustee districts from and after the Effective Date; and that **Exhibits A and B** are incorporated by reference in and made a part of this Resolution, and shall be kept on file in the Board's Office.

B. That, pursuant to section 130.0826 of the Texas Education Code, the trustees currently in office shall serve out the remainder of their terms; and the trustee positions shall be filled as the staggered terms of trustees then in office expire.

C. That this Resolution shall take and be given effect immediately; and that hereafter all District trustee elections shall be held under and in accordance with the new single-member trustee districting plans here adopted by the Board until such time as a subsequent lawfully-enacted districting plans shall be adopted to replace these plans.


PASSED AND APPROVED by the Board of Trustees of the Blinn College District this 15th day of November 2022.

BLINN COLLEGE DISTRICT


Jim Kolkhorst, Board Chair

ATTEST: 

Charles Moser, Board Secretary

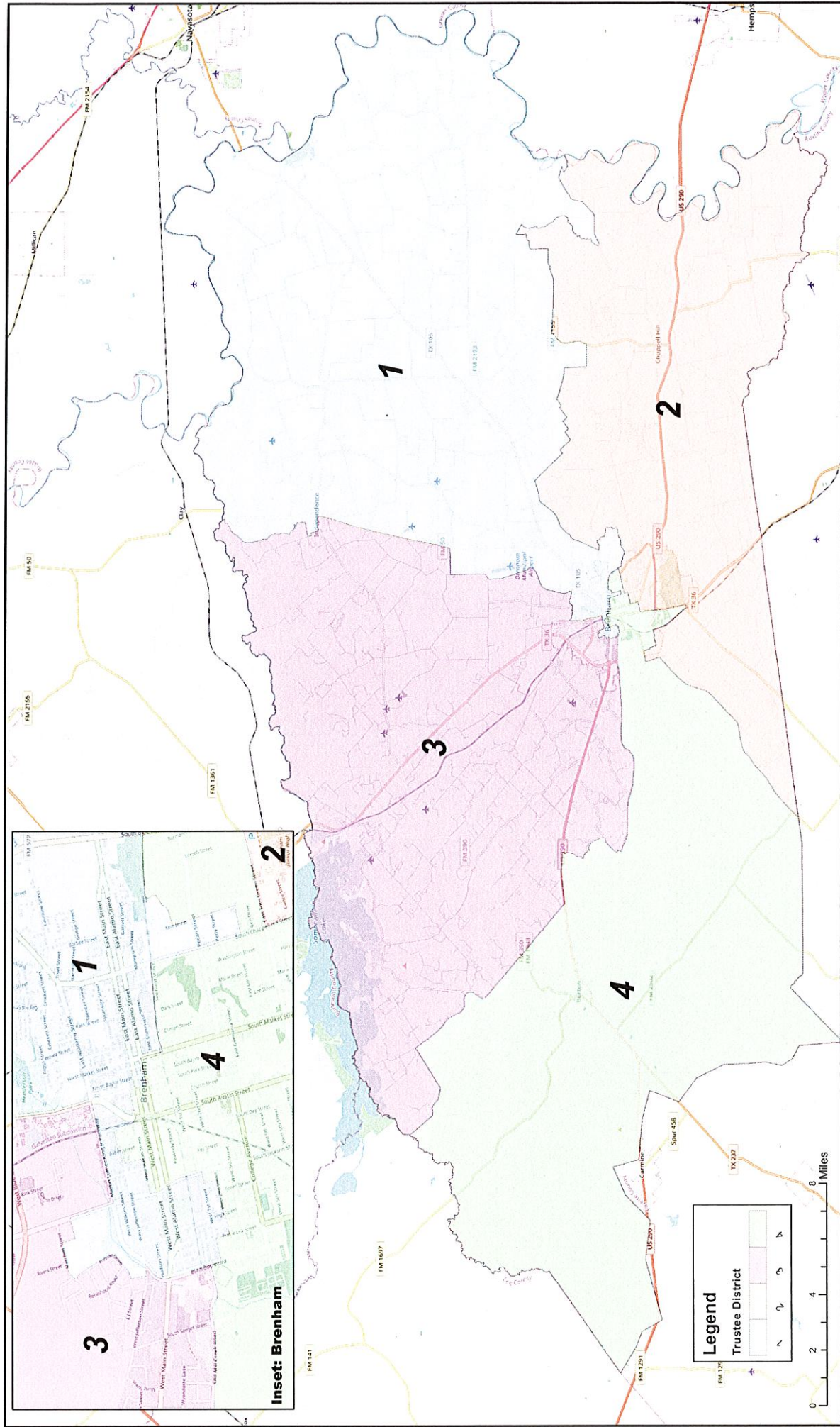
APPROVED AS TO FORM:


Leighton Schubert, Legal Counsel

EXHIBIT A

Maps

(Four Trustee Districts)

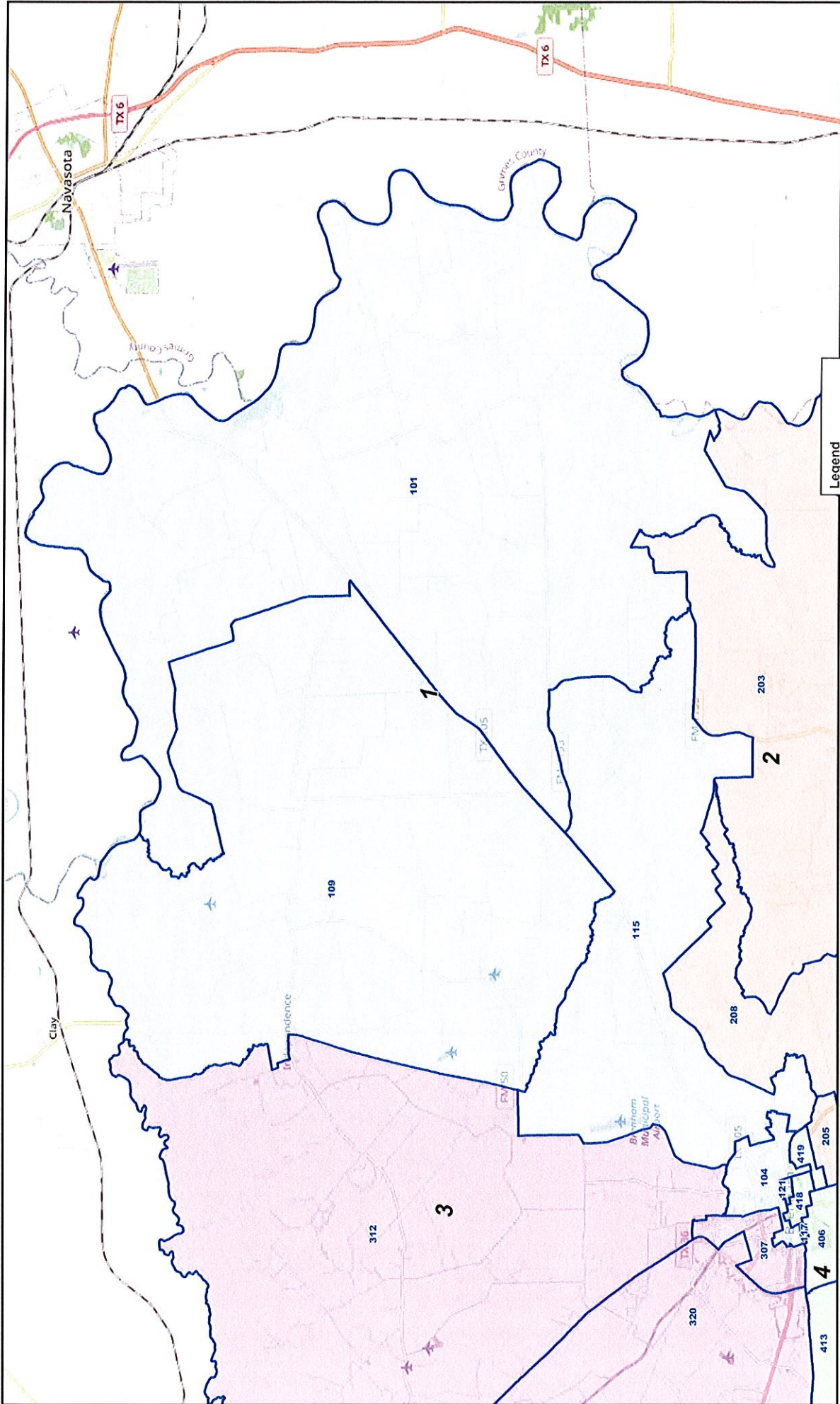


Created: 10/22/2022
 Trustee Districts are comprised of
 the adopted Washington County
 Commissioner Precincts (November 12, 2021)

Blinn College 2022 Trustee Districts - Adopted November 15, 2022

© 2022 Bickerstaff Heath Delgado Acosta LLP
 Data Source: Roads, Water and other
 features obtained from the 2020
 Tiger/line files, U.S. Census Bureau





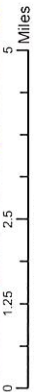
© 2022 Bickerstaff Heath Delgado Accosta LLP
 Data Source: Roads, Water and other
 features obtained from the 2020
 Tiger/line files, U.S. Census Bureau

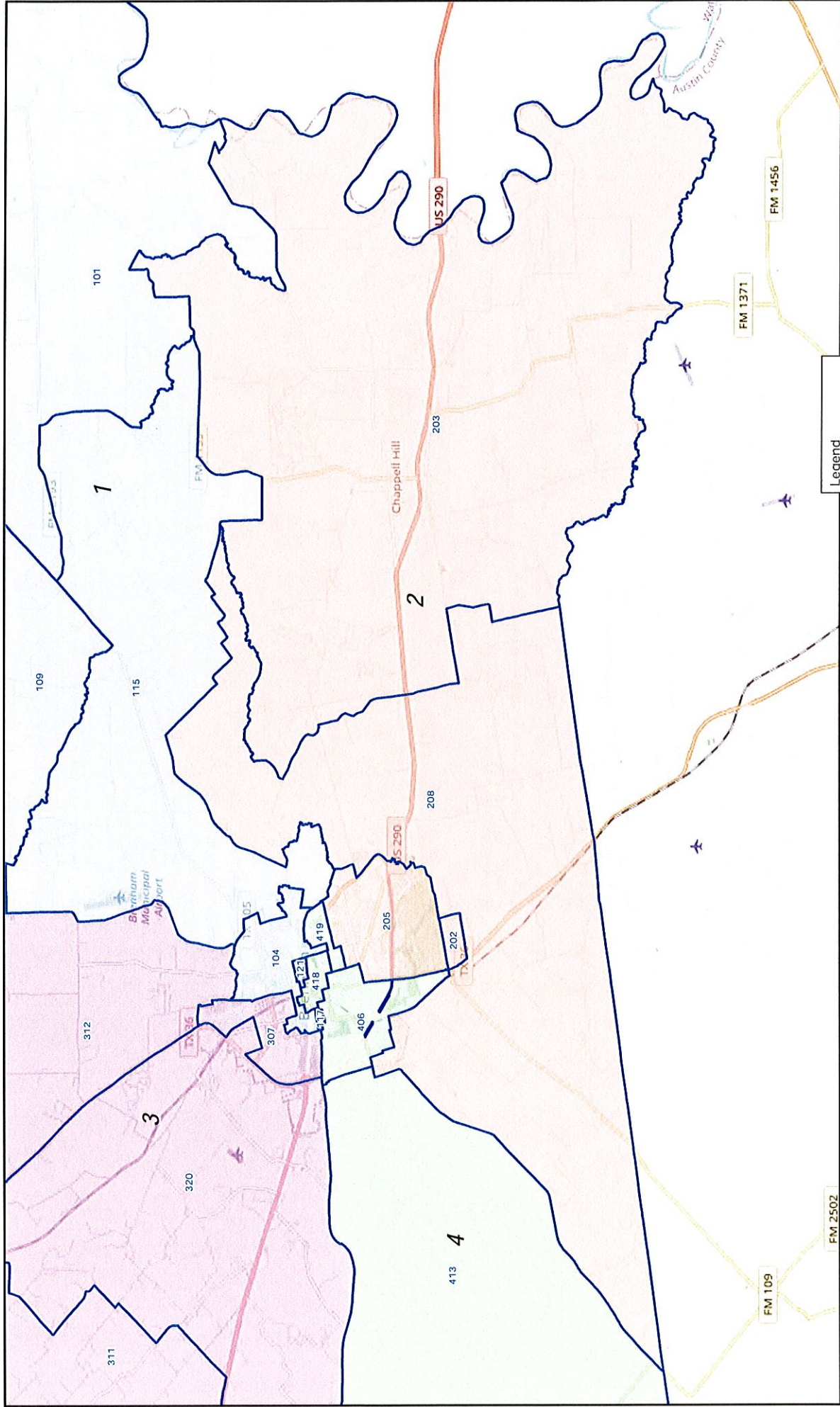
Legend

- 2022 Election Precincts
- Trustee District

Blinn College
2022 Trustee Districts - Adopted November 15, 2022
District 1

Created: 10/22/2022
 Trustee Districts are comprised of the adopted
 Washington County Commissioner Precincts
 (November 12, 2021)





© 2022 Bickerstaff Heath Delgado Acosta LLP
 Data Source: Roads, Water and other features obtained from the 2020 Tiger/linc files, U.S. Census Bureau



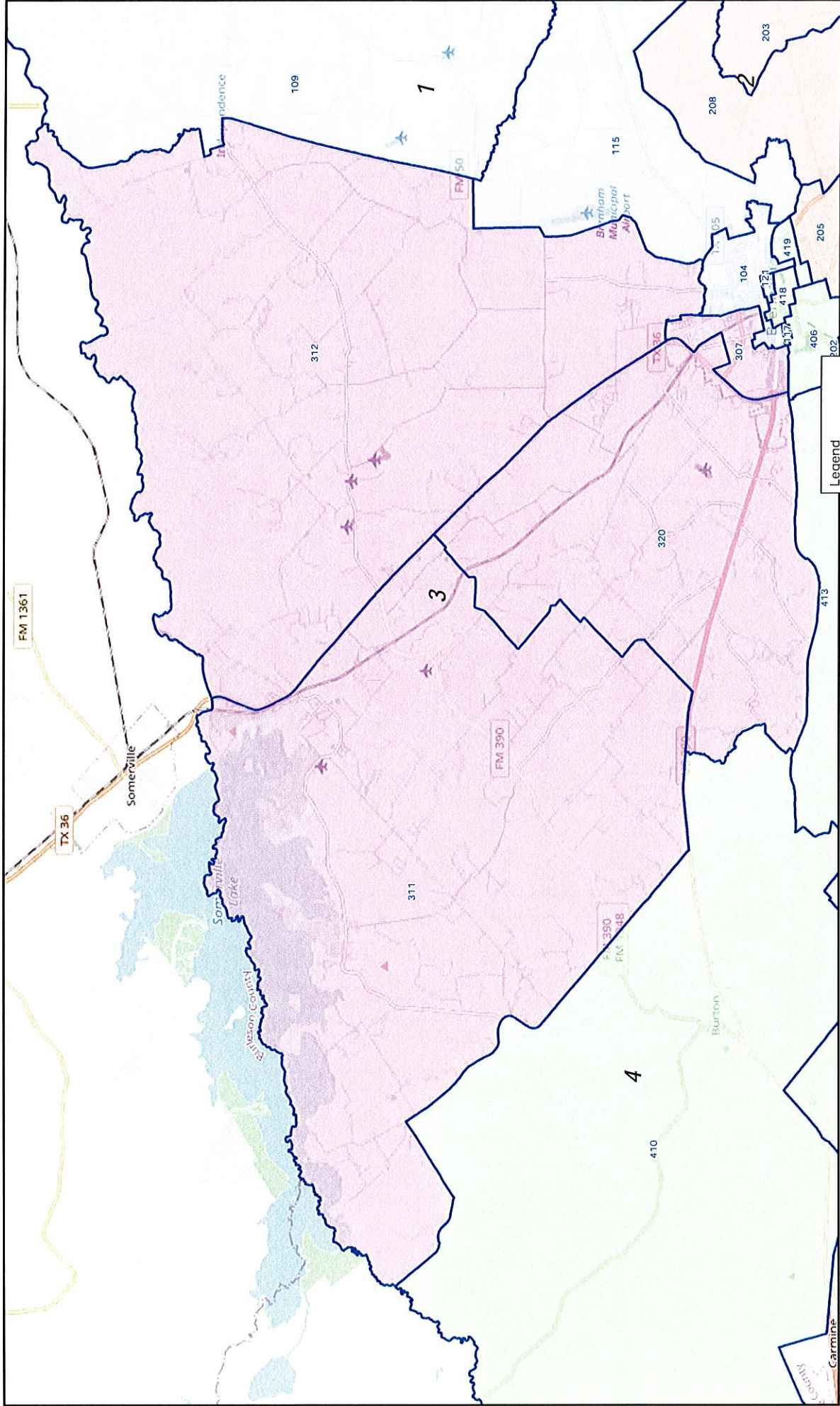
Legend

- 2022 Election Precincts
- Trustee District

Blinn College
 2022 Trustee Districts - Adopted November 15, 2022
 District 2

Created: 10/22/2022
 Trustee Districts are comprised of the adopted Washington County Commissioner Precincts (November 12, 2021)



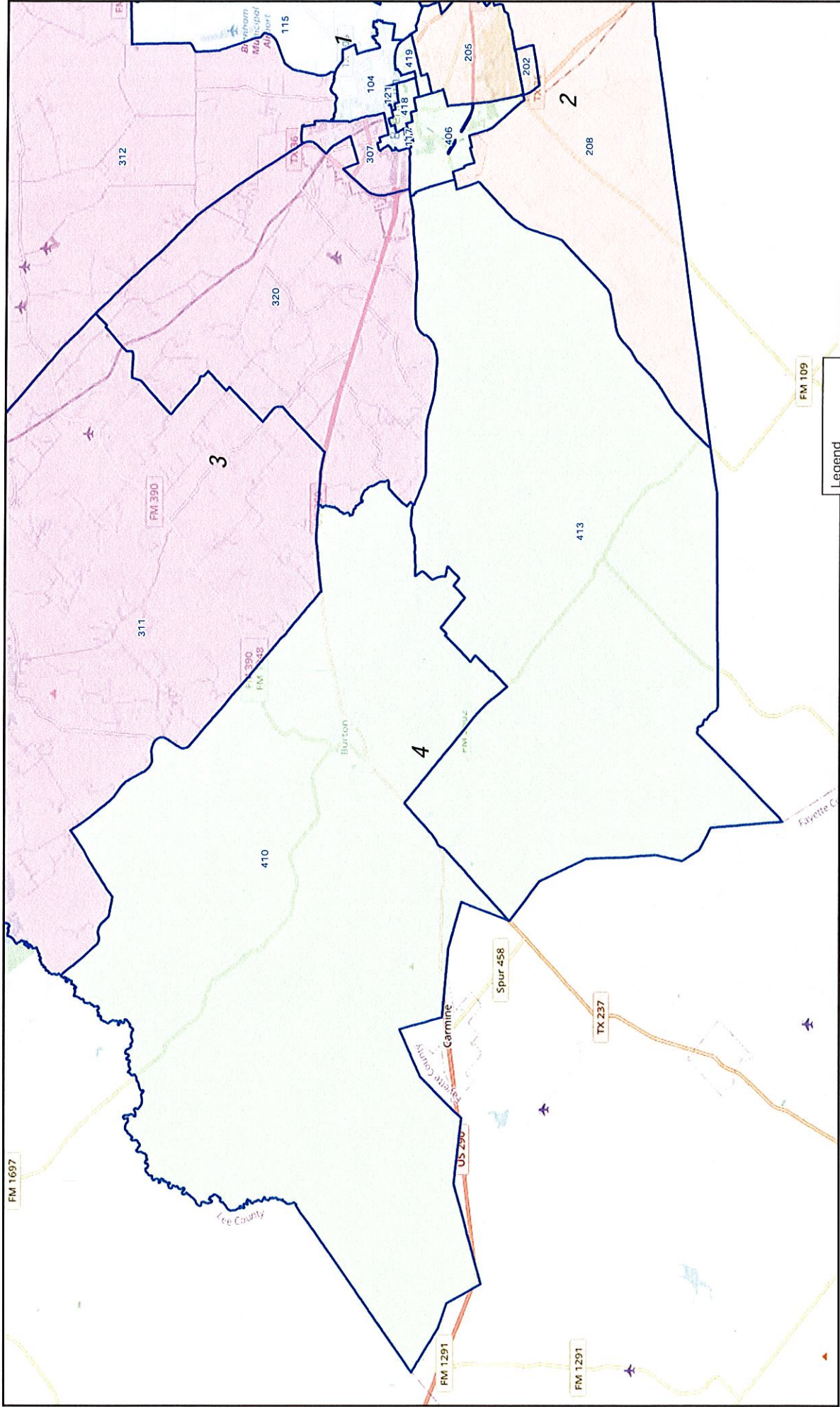


Blinn College
2022 Trustee Districts - Adopted November 15, 2022
District 3

Created: 10/22/2022
 Trustee Districts are comprised of the adopted
 Washington County Commissioner Precincts
 (November 12, 2021)

© 2022 Bickerstaff Heath Delgado Acosta LLP
 Data Source: Roads, Water and other
 features obtained from the 2020
 Tigris/line files, U.S. Census Bureau





Blinn College
2022 Trustee Districts - Adopted November 15, 2022
District 4

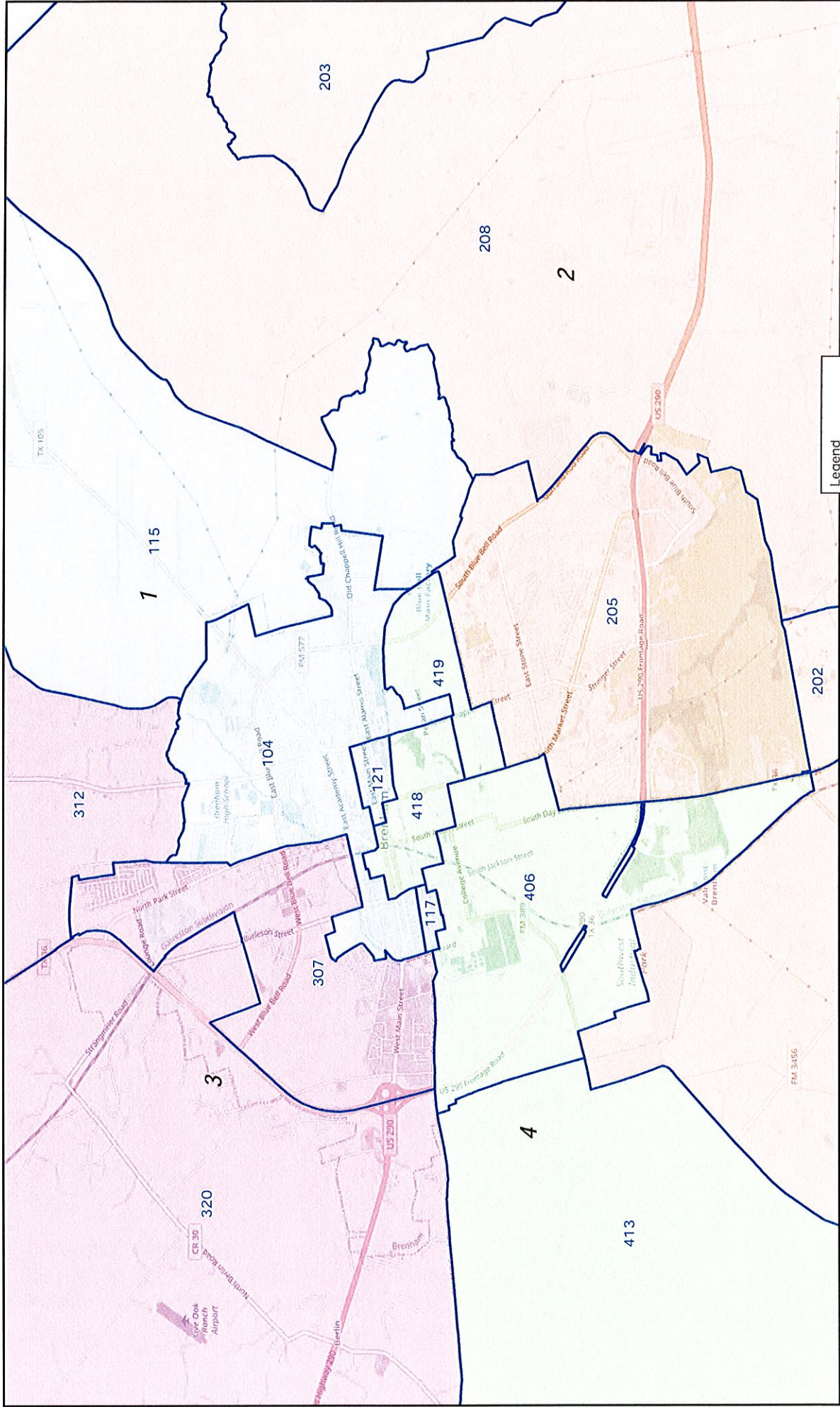
Created: 10/22/2022
 Trustee Districts are comprised of the adopted
 Washington County Commissioner Precincts
 (November 12, 2021)

Legend

- 2022 Election Precincts
- Trustee District

© 2022 Bickerstaff Heath Delgado Acosta LLP
 Data Source: Roads, Water and other
 features obtained from the 2020
 Tigris/line files, U.S. Census Bureau





© 2022 Bickerstaff Heath Delgado Acosta LLP
 Data Source: Roads, Water and other features obtained from the 2020 Tiger/line files, U.S. Census Bureau

Legend

- 2022 Election Precincts
- Trustee District

Blinn College
 2022 Trustee Districts - Adopted November 15, 2022
 Inset: Brenham

Created: 10/22/2022
 Trustee Districts are comprised of the adopted Washington County Commissioner Precincts (November 12, 2021)



EXHIBIT B

Tables

(Four Trustee Districts)

Demographics Report - Summary 2020 Census Total Population

Plan Last Edited on: 2/22/2022 2:37:21 PM

District	Persons	Ideal Size	Deviation	Hispanic % of Total Population	Non-Hispanic White % of Total Population	Non-Hispanic Black % of Total Population	Non-Hispanic Asian % of Total Population	Non-Hispanic Other % of Total Population
1	8,989	8,951	0.42%	22.35%	44.29%	29.02%	0.92%	3.42%
2	9,117	8,951	1.85%	17.21%	68.28%	9.76%	2.00%	2.75%
3	8,837	8,951	-1.28%	15.84%	69.36%	9.03%	1.99%	3.78%
4	8,862	8,951	-1.00%	16.33%	64.18%	14.20%	1.20%	4.10%
TOTAL:	35,805			17.94%	61.51%	15.51%	1.53%	3.51%

Ideal Size: 35,805 / 4 = 8,951

Total Population: 35,805

Overall Deviation: 3.13%

Some percentages may be subject to rounding errors.

Trustee Districts are comprised of Washington County Commissioner Precincts - Adopted November 12, 2021

Plan Name: Blinn College: 2022 Trustee Districts - Adopted November 15, 2022

Demographics Report - Detailed 2020 Census Total Population

Plan Last Edited on: 2/22/2022 2:37:21 PM

District	Persons	Ideal Size	Deviation	Hispanic	Hispanic % of Total Population	ANGLO	Non-Hispanic Anglo % of Total Population	Black	Black % of Total Population	Asian	Asian % of Total Population	AM Indian Native	IND / NAT % TOT Pop.	Haw Pac. Isl.	HAW/ PAC % of Total Pop.	Other	Other % of Total Pop.	Two or More Races	Two or More Races % Tot Pop
1	8,989	8,951	0.42%	2,009	22.35%	3,981	44.29%	2,609	29.02%	83	0.92%	20	0.22%	0	0.00%	33	0.37%	254	2.83%
2	9,117	8,951	1.85%	1,569	17.21%	6,225	68.28%	890	9.76%	182	2.00%	14	0.15%	2	0.02%	44	0.48%	191	2.09%
3	8,837	8,951	-1.28%	1,400	15.84%	6,129	69.36%	798	9.03%	176	1.99%	24	0.27%	2	0.02%	38	0.43%	270	3.06%
4	8,862	8,951	-1.00%	1,447	16.33%	5,688	64.18%	1,258	14.20%	106	1.20%	17	0.19%	10	0.11%	25	0.28%	311	3.51%
TOTAL:	35,805			6,425	17.94%	22,023	61.51%	5,555	15.51%	547	1.53%	75	0.21%	14	0.04%	140	0.39%	1,026	2.87%

Ideal Size: 35,805 / 4 = 8,951

Total Population: 35,805

Overall Deviation: 3.13%

*Some percentages may be subject to rounding errors.
Trustee Districts are comprised of Washington County Commissioner Precincts - Adopted November 12, 2021*

Report Date: 2/22/2022 2:40:54 PM

Based on: 2020 Census Geography, 2020 PL94-171

Demographics Report - Summary 2020 Census Voting Age Population

Plan Last Edited on: 2/22/2022 2:37:21 PM

District	Total VAP*		Hispanic % of Total VAP	Non-Hispanic Anglo % of Total VAP	Non-Hispanic Black % of Total VAP	Non-Hispanic Asian % of Total VAP	Non-Hispanic Other % of Total VAP
1	6,908		18.36%	48.34%	29.78%	0.75%	2.78%
2	7,153		13.49%	73.03%	9.14%	2.04%	2.29%
3	6,976		13.02%	73.22%	8.34%	2.11%	3.31%
4	7,224		13.59%	67.11%	14.53%	1.19%	3.57%
	28,261		14.59%	65.53%	15.37%	1.53%	2.99%

* VAP - Voting Age Population

Some percentages may be subject to rounding errors.

Trustee Districts are comprised of Washington County Commissioner Precincts - Adopted November 12, 2021

**Plan Name: Blinn College: 2022 Trustee Districts - Adopted November 15, 2022
Demographics Report - Detailed 2020 Census Voting Age Population**

Plan Last Edited on: 2/22/2022 2:37:21 PM

District	Total VAP	Hispanic VAP	% Hispanic VAP	Anglo VAP	% Anglo VAP	Black VAP	% Black VAP	Asian VAP	% Asian VAP	AM IND NATIVE VAP	% AM IND NATIVE VAP	HAW/PAC VAP	% HAW/PAC VAP	Other VAP	% Other VAP	Two or More Races VAP	% Two or more VAP
1	6,908	1,268	18.36%	3,339	48.34%	2,057	29.78%	52	0.75%	12	0.17%	0	0.00%	23	0.33%	157	2.27%
2	7,153	965	13.49%	5,224	73.03%	654	9.14%	146	2.04%	13	0.18%	2	0.03%	27	0.38%	122	1.71%
3	6,976	908	13.02%	5,108	73.22%	582	8.34%	147	2.11%	21	0.30%	2	0.03%	31	0.44%	177	2.54%
4	7,224	982	13.59%	4,848	67.11%	1,050	14.53%	86	1.19%	17	0.24%	10	0.14%	21	0.29%	210	2.91%
TOTALS:	28,261	4,123	14.59%	18,519	65.53%	4,343	15.37%	431	1.53%	63	0.22%	14	0.05%	102	0.36%	666	2.36%

* VAP - Voting Age Population

Some percentages may be subject to rounding errors.
Trustee Districts are comprised of Washington County Commissioner Precincts - Adopted November 12, 2021

Report Date: 2/22/2022 2:41:24 PM
Based on: 2020 Census Geography, 2020 PL94-171